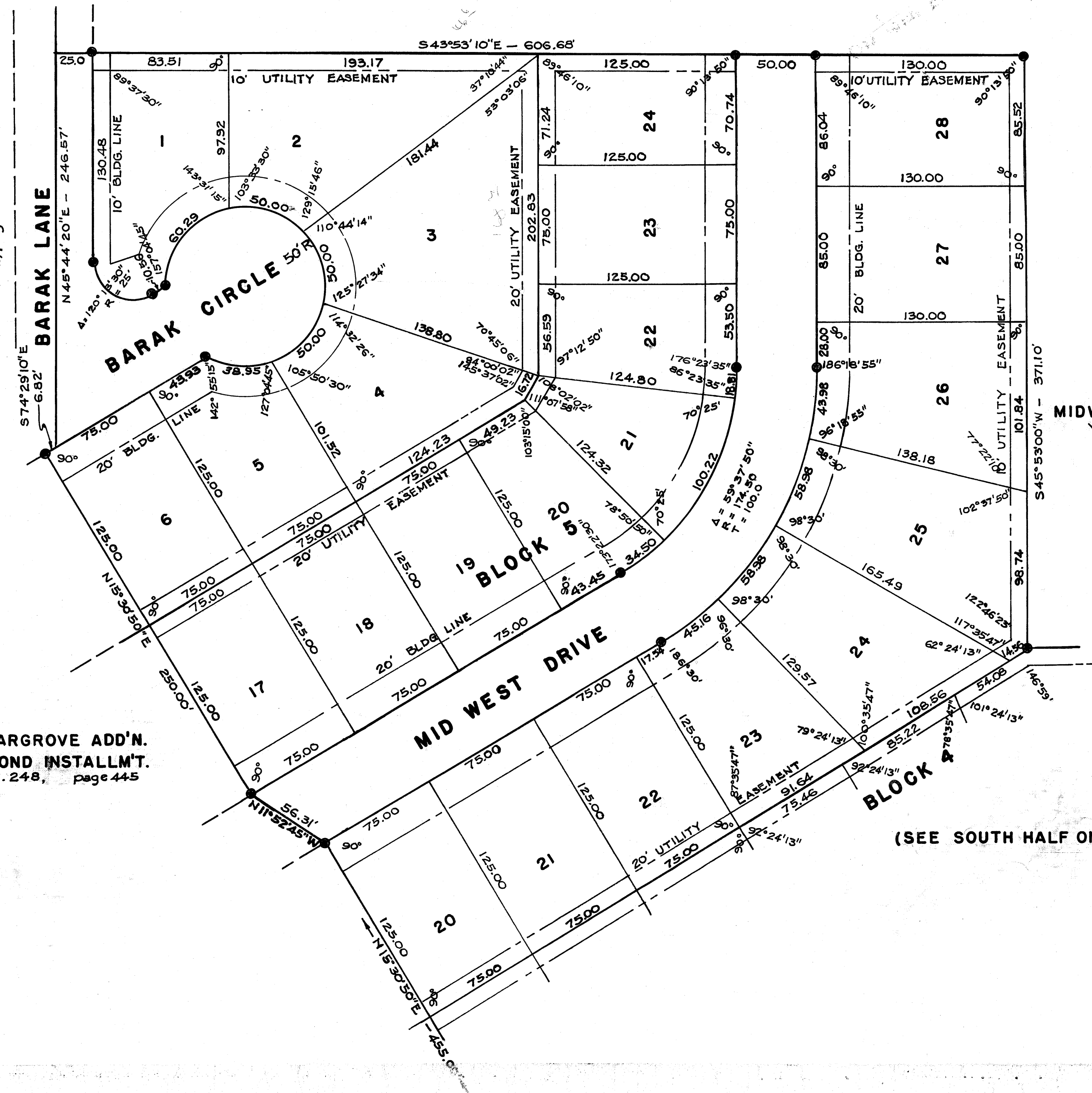


on line
4/17/66 WD

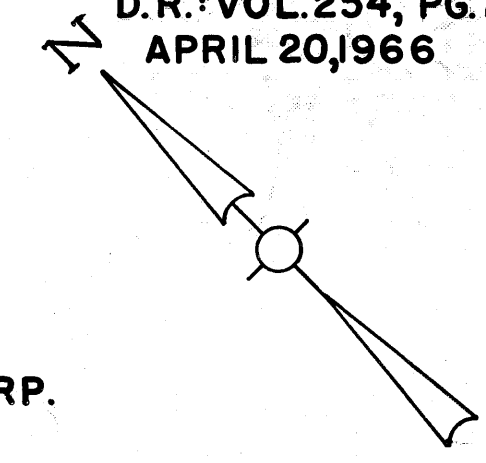
BRIARGROVE ADDN.
THIRD INSTALLM'T.
Vol. 252, page 103

BRIARGROVE ADD'N.
SECOND INSTALLM'T.
Vol. 248, page 445



**BRIARGROVE ADDITION
FOURTH INSTALLMENT
NORTH HALF
BRYAN, TEXAS
APRIL, 1966**

SCALE: 1" = 50'
D.R.: VOL. 254, PG. 705
APRIL 20, 1966



MIDWEST VIDEO CORP.
Vol. 170, page 304

NOTE:

- All property corners are marked by 1/2" round iron rods.
- Concrete monuments are placed as shown by ●.
- All angles are 90° unless otherwise noted.
- All radii are 25' " " " "
- All lot dimensions same as adjoining lot unless otherwise noted.
- Lot dimensions along curves are chord distances.

(SEE SOUTH HALF ON ADJOINING PAGE)

**BRIARGROVE ADDITION
FOURTH INSTALLMENT
SOUTH HALF
BRYAN, TEXAS
APRIL, 1966**

SCALE: 1" = 50'
D.R.: VOL. 254, PG. 705
APRIL 20, 1966

NOTE:
All property corners are marked by 1/2" round iron rods.
Concrete monuments are placed as shown by ●.
All angles are 90° unless otherwise noted.
All radii are 25' " " "
All lot dimensions same as adjoining lot unless otherwise noted.
Lot dimensions along curves are chord distances.

(SEE NORTH HALF ON ADJOINING PAGE)

MIDWEST VIDEO CORP.
Vol. 170, page 304 S 43° 52' 23" E - 501.51'

on land base
UD 12/15/65

**BRIARGROVE ADD'N.
FIRST INSTALLM'T.**
Vol. 246, page 535

**PROPOSED
BRIARGROVE ADD'N.
FIFTH INSTALLM'T.**

B.B. SCASTA ADD'N.
Vol. 242, page 345

